

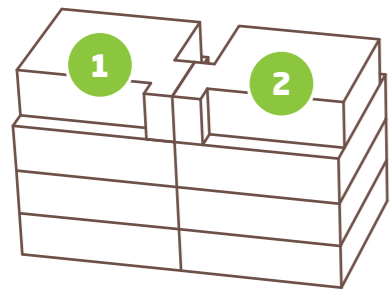


**BOMMERT**

Natürlich Wohnen  
im Widnauer Obstgarten

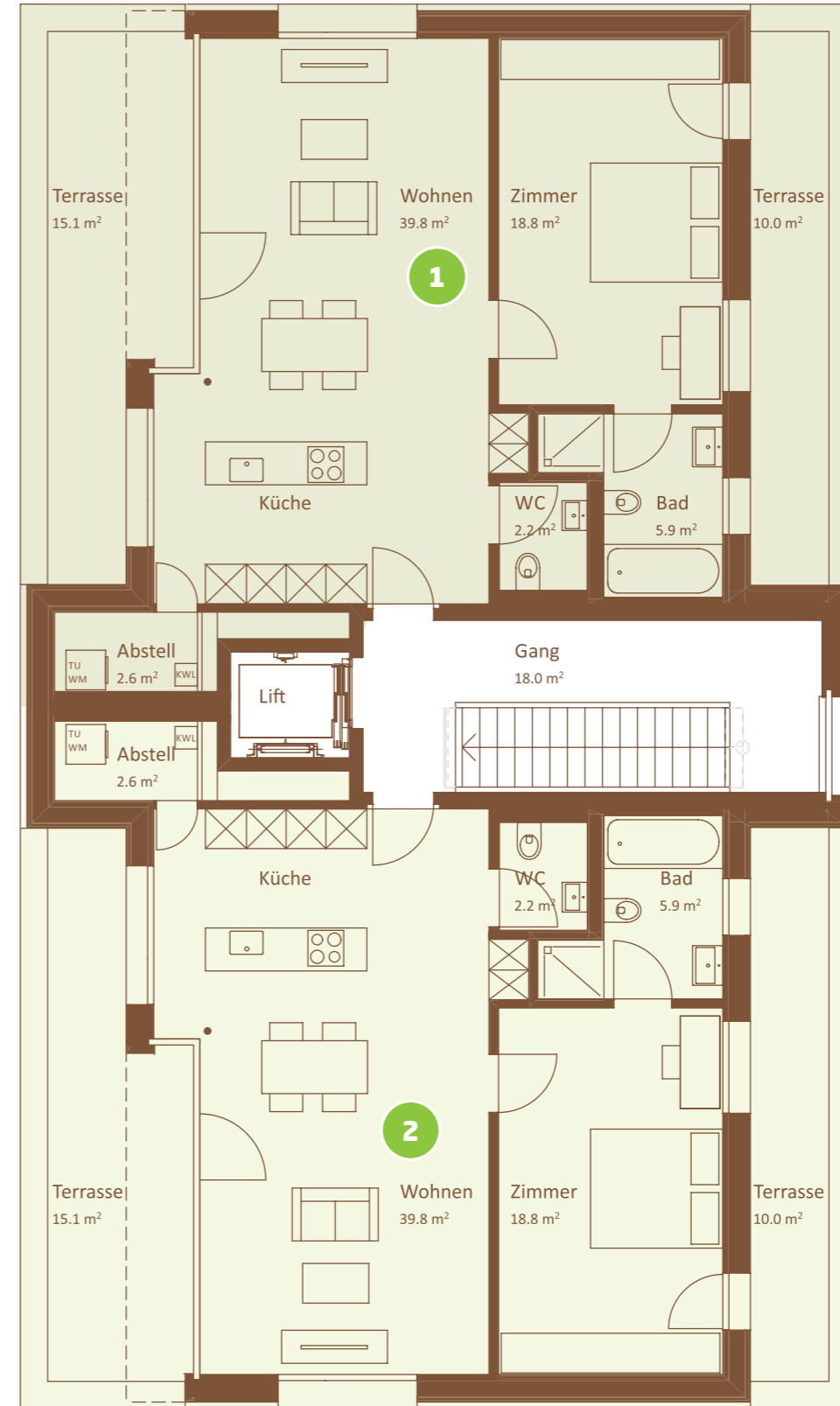
GRUNDRISSE

**Haus Heubirne Attika**



**1 WHG H301** | Attika | 2.5-Zimmer  
Wohnfläche 70 m<sup>2</sup> / Terrasse 25 m<sup>2</sup>

**2 WHG H302** | Attika | 2.5-Zimmer  
Wohnfläche 70 m<sup>2</sup> / Terrasse 25 m<sup>2</sup>



MASSSTAB 1:100

