

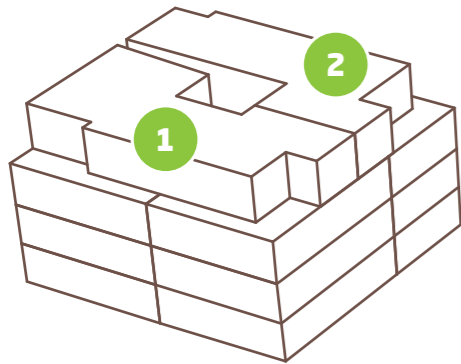


BOMMERT

Natürlich Wohnen
im Widnauer Obstgarten

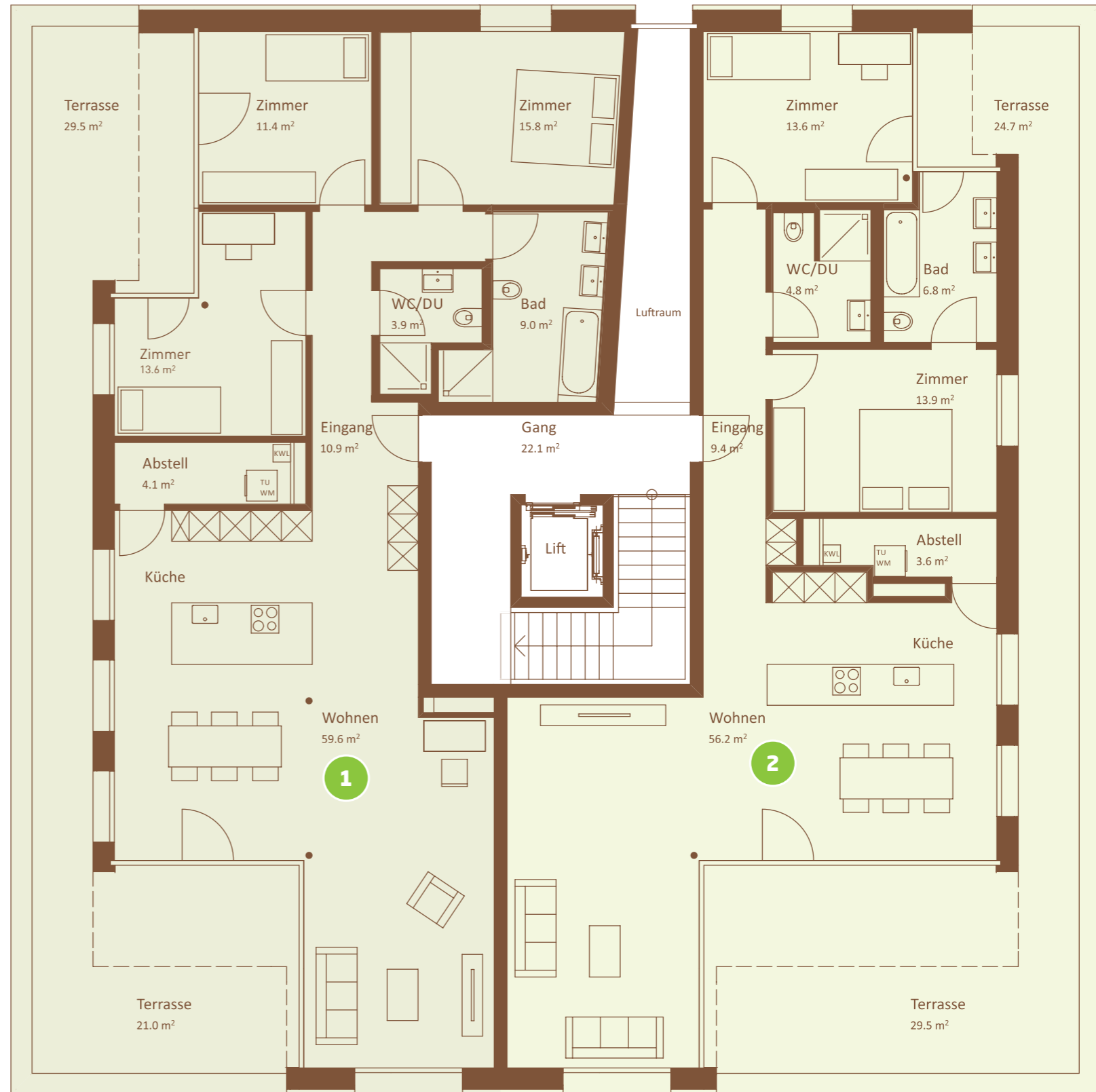
GRUNDRISSE

Haus Klarapfel Attika



1 WHG K301 | Attika | 4.5-Zimmer
Wohnfläche 129 m² / Terrasse 50 m²

2 WHG K302 | Attika | 3.5-Zimmer
Wohnfläche 109 m² / Terrasse 54 m²



MASSSTAB 1:100

